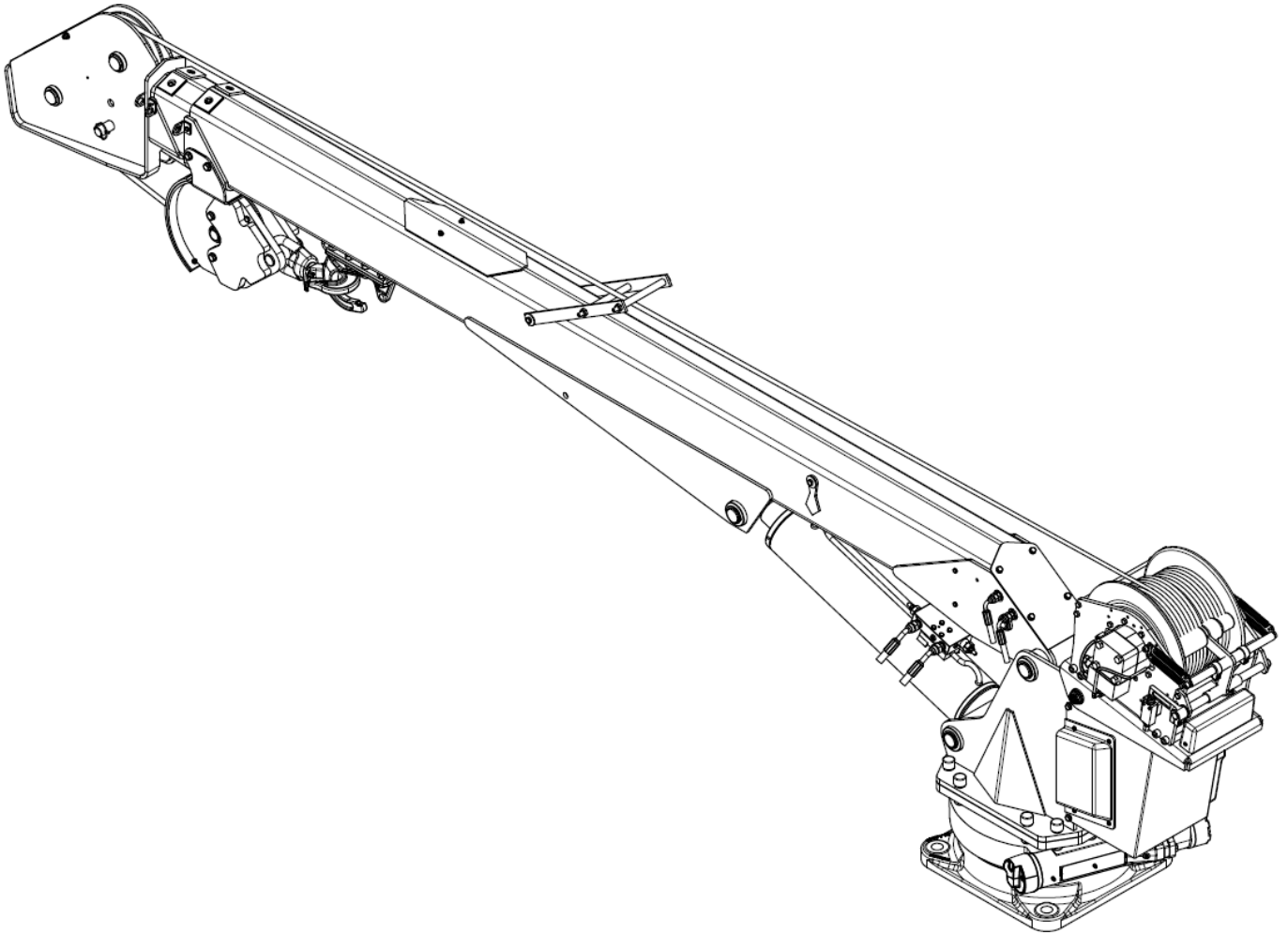


# maxilift 9700 cobra

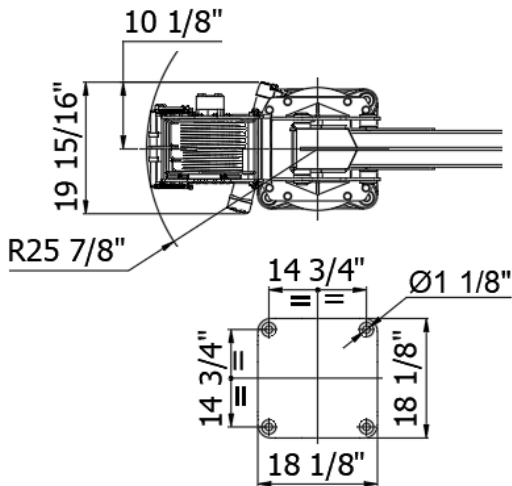
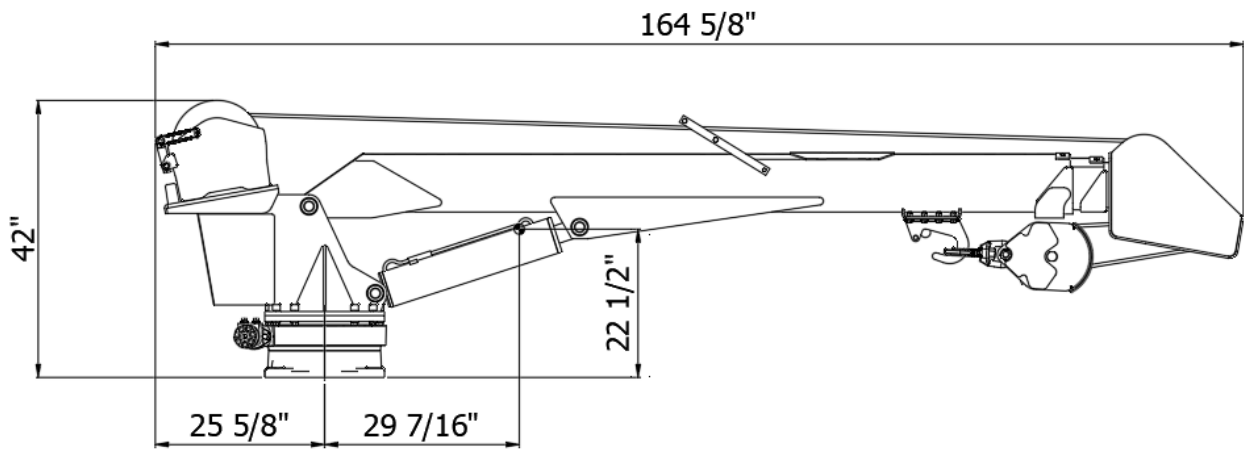
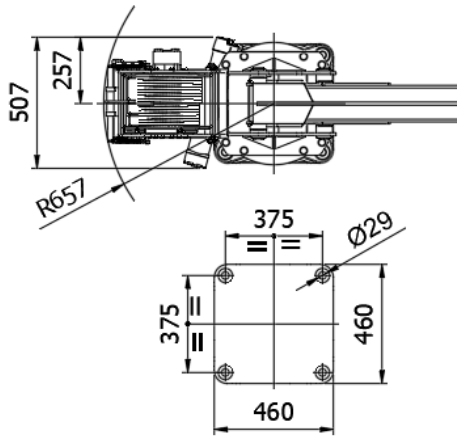
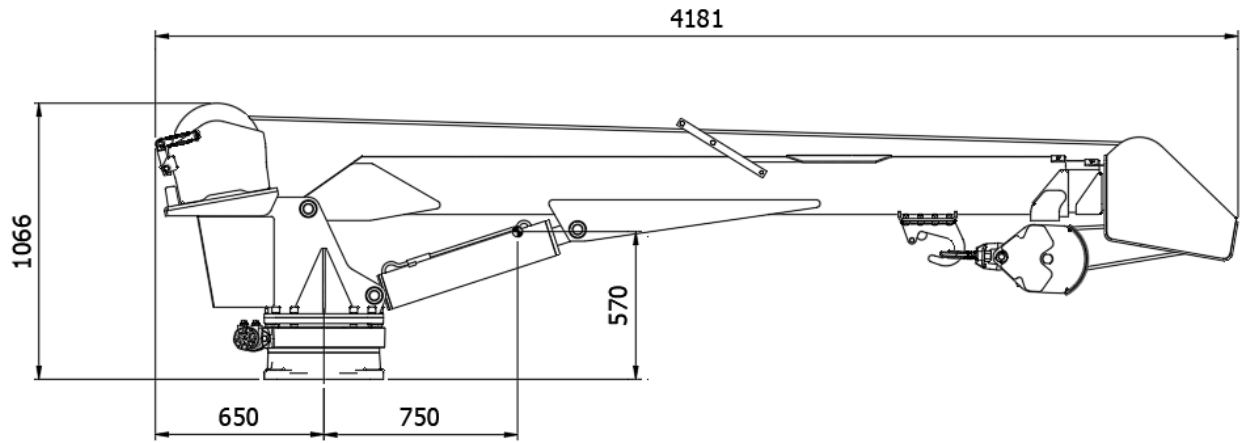


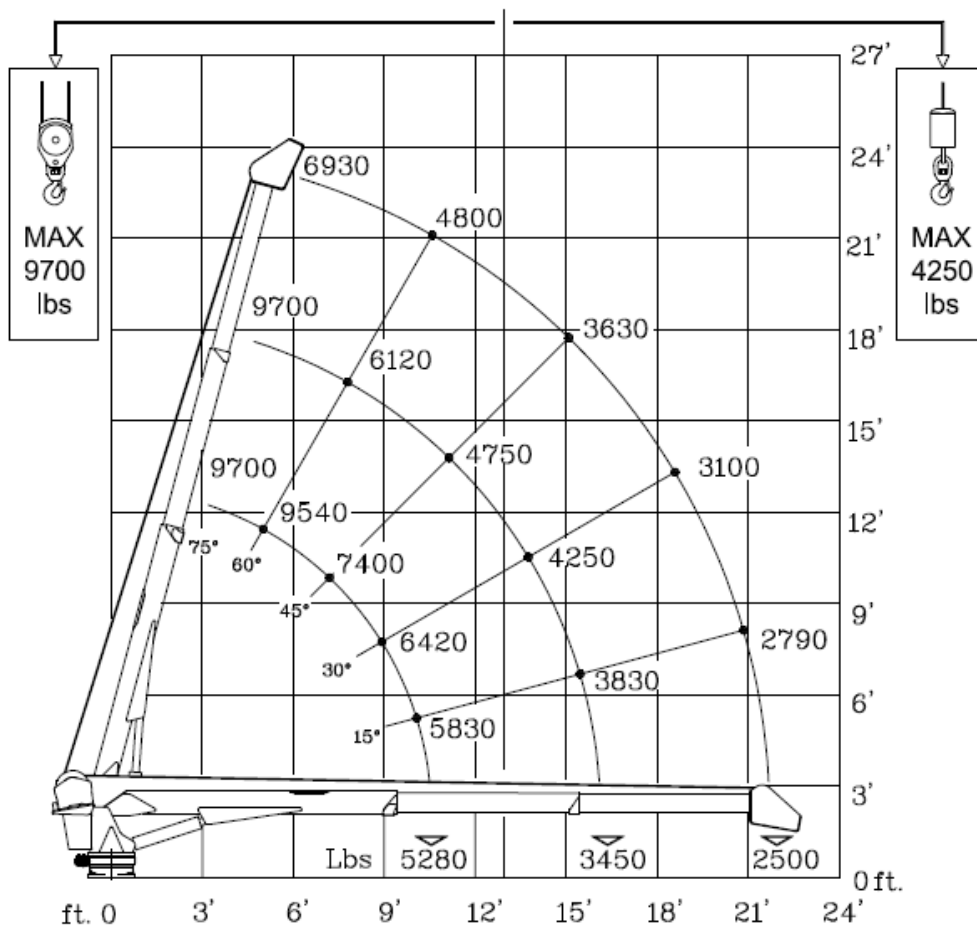
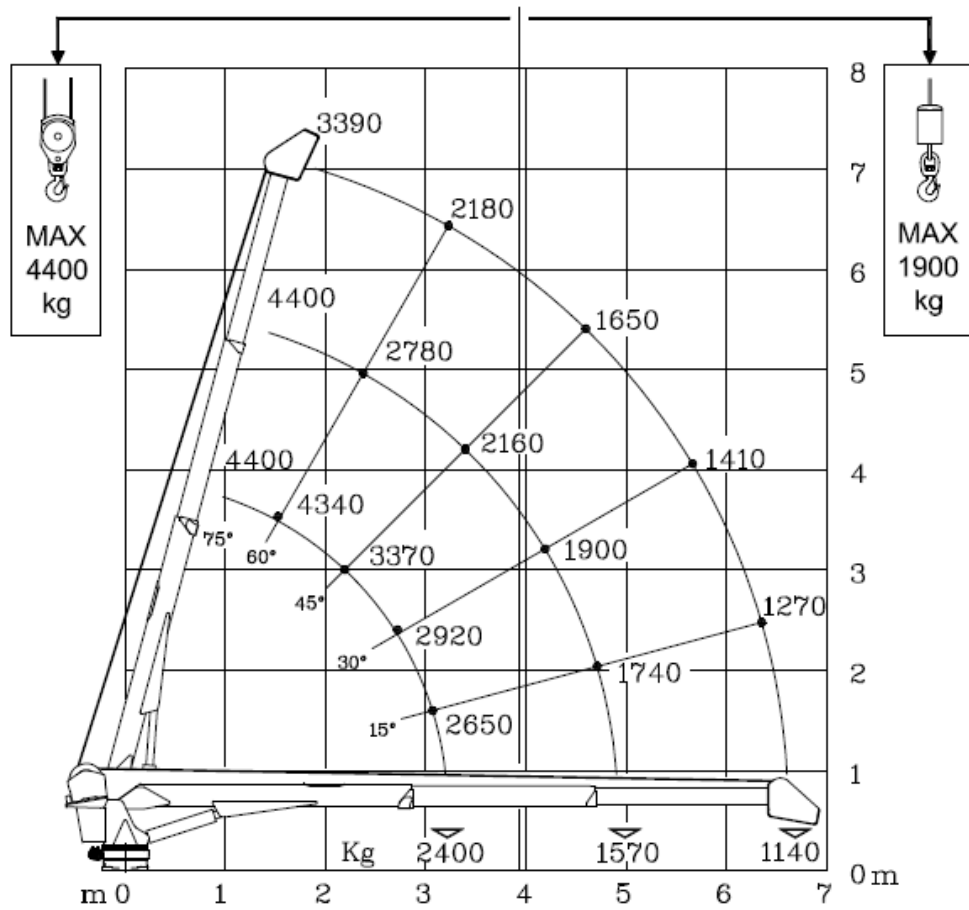
## TECHNICAL SHEET

MP.0.227



**Next Hydraulics**<sup>®</sup>  
RAISE YOUR EXPECTATIONS





TECHNICAL DATA	<h1>Cobra 9700</h1>	
CRANE RATING	kNm ft.lbs	75.0 55000
EXTENSIONS TYPE		2 HYDRAULIC
HYDRAULIC EXTENSION	m ft	3.4 11' 2"
HORIZONTAL REACH (from center line of rotation)	m ft	6.65 21'10"
LIFTING HEIGHT FROM BASE OF CRANE	m ft	7.0 23'
SLEWING ANGLE	°	CONTINUOUS
SLEWING TORQUE	kNm ft.lbs	7.4 5450
BOOM ELEVATION ANGLE	°	-6°/ +75°
MAX. WORKING PRESSURE	bar psi	210 3080
SUGGESTED OIL FLOW	l/min gpm	15 - 20 4 - 5
CRANE WEIGHT	kg lbs	800 1760

WINCH SPECIFICATIONS		
WINCH SINGLE LINE CAPACITY (1 <sup>ST</sup> layer)	kg lbs	2210 4860
WINCH SINGLE LINE CAPACITY (3 <sup>RD</sup> layer)	kg lbs	1820 4000
WINCH PULL LINE SPEED (2 <sup>ND</sup> -3 <sup>RD</sup> layer)	m/min ft/min	10-13 33-43
WIRE ROPE DIAMETER	mm in	12 15/32"
WIRE ROPE LENGTH	m ft	35 115'